

Staff on the stand



TOM CRAIG Director
Mobile: +44 7771 822 003
Email: tom.craig@terasaki.co.uk
Present Monday to Thursday



GEORGIE SMITH Director
Mobile: +44 7885 577 319
Email: georgie.smith@terasaki.co.uk
Present Monday to Wednesday



TIM CAMPBELL Marketing Manager
Mobile: +44 7899 995 628
Email: tim.campbell@terasaki.co.uk
Present Monday to Friday



EDDIE DONNELLY Product Marketing Engineer
Email: eddie.donnelly@terasaki.co.uk
Present Thursday to Friday



YUKIHIKO ASAO Executive Manager Marketing
Email: yukihiro-asao@terasaki.co.jp
Present Monday to Thursday



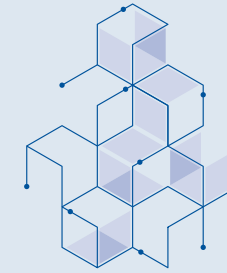
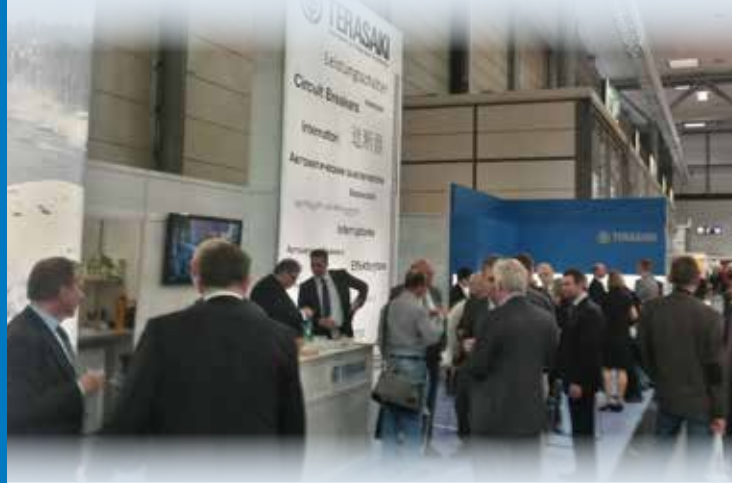
DAVID WALES Export Area Manager
Mobile: +44 7795 837 058
Email: david.wales@terasaki.co.uk
Present Tuesday to Thursday



ALISON ANDERSON
Sales Operations Manager
Email: alison.anderson@terasaki.co.uk
Present Monday to Wednesday



TERASAKI
Innovators in Protection Technology



TERASAKI
Innovators in Protection Technology

POWERING TODAY
CONNECTING TOMORROW

Schedule

The Terasaki stand will be open:
09.00-18.00 on the 1st-5th April 2019

Circuit Breakers in Switchboards

Our circuit breakers are also shown at the stands of our partners this week, including:

- Cubic: Hall 12 Stand D36
- Logstrup: Hall 12 Stand D25
- Lafer: Hall 12 Stand E39

Feel free to visit them and discuss Terasaki products.

happy
hour

Join us on the Stand
17.00 to 18.00 each evening
for Drinks Reception & Whisky Tasting



HANNOVER MESSE EXHIBITION

Hannover, Germany
Hall 12, Stand D81
1st-5th April 2019

Try our Hands-on demos

Retrofit for Merlin Gerin Selpact



Faster switchgear upgrades with our retrofit ACB.

Replaces:

- Merlin Gerin
- Ellison
- GEC
- ABB
- UNELEC
- MEM
- Schneider
- Mitsubishi
- Sace
- and many more!

New AGR-H Protection Relay with More Power Quality Monitoring



Try out the features on our demo:

- Monitor energy, power, voltage, current
- Measure Harmonics (new)
- Protect from contact overheating (unique to Terasaki)
- Protect from voltage and frequency fluctuations (new)
- Record 10 events in memory new
- Fine-tune protection to the nearest Amp (new)
- Protect from overloads, phase faults and ground faults

Communicating Circuit Breakers



Breakers which can be monitored and controlled from your network.

- Integrated back-lit LCD
- Digital communication
- Power measurement
- Energy measurement
- Harmonic analysis

